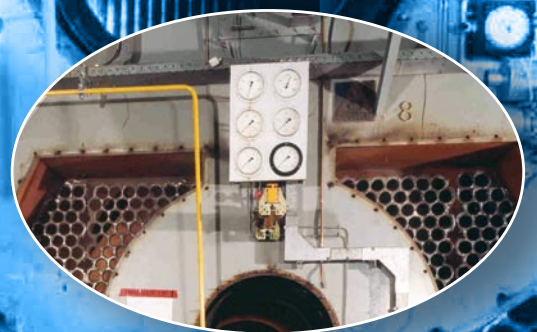




Standard Fasel

Worldwide Energy Services

SERVICE, OPTIMISATION AND MAINTENANCE FOR BURNERS AND BOILER HOUSES



**Standard Fasel**

Worldwide Energy Services

E-mail info@standardfasel.nl

Website www.standardfasel.nl

Emergency service outside office hours

Contact : +31 (0)30 244 9244

Service and Maintenance

SERVICE, OPTIMISATION AND MAINTENANCE FOR BURNERS AND BOILER HOUSES

Standard Fasel will assist you with any questions you may have, and also during every phase in relation to boiler systems and burners, energy conversion, enhancing returns and residual life-span determination. The fact that we are experts in both the burners and the entire boiler plants puts us in a position to optimally support and unburden you.

Burner maintenance

The burner technology is one of the Standard Fasel spearheads. Our burner group has an experienced team of qualified burner technicians, supported by an office department with extensive knowledge of all available types of burners.

Our own people use our in-house knowledge pool for designing and engineering new burners and making modifications and improvements to existing burners. This also applies to the corresponding operating and control systems.

Standard Fasel is certified in accordance with the SCIOS (Stichting Certificatie Inspectie en Onderhoud Stookinstallaties). We can offer you expert advice in relation to desirable improvements or necessary modifications, which may be required due to e.g. new statutory or safety regulations. We can also implement the requirements, again using our own people, our own project team.

We have the know-how and the staff to execute the following tasks, among others: (scope 2,3,5,6,7a,7b,7c, and BEES-A)

- Maintenance and repairs of several types of burner units and from a variety of suppliers.
- Regularly executing Periodical Maintenance Services (PO) and Periodical Inspection Services (PI) and executing the First Special Inspection, for example subsequent to major adjustments to the system, also EBI is possible.
- Renewing and modifying existing burner units/installation with, for example, the aim of increasing the return and/or to reducing the emission.
- Implementation of process-control and process-automation including remote monitoring and control

Maintenance of boiler-installations

Standard Fasel Boiler has an excellently equipped and qualified team of maintenance technicians and qualified service inspectors, supported by experts in the office department. We are on stand-by 24/7 for repairs to your boiler-installation in the event of an emergency situation. Our swift on-site arrival times are attributable to our regional-based availability and presence.

The operational reliability of your installation is our main trademark. We would be very pleased to carry out this service; however we are also well prepared to execute preventive and corrective maintenance, which in turn prevents calamities and increases the operational reliability of your installation.

Our service package for boiler installations includes the following:

- Inspections, preventative and corrective maintenance
- Executing statutory periodical inspections
- Supplying parts and spare parts
- Modifying, modernising and optimising boiler houses
- Steam-traps, piping- and hanger inspections
- Renewing fire-tubes
- Water treatment units
- Economisers and flue gas condensers
- Boiler unit rentals



Standard Fasel

Krommewetering 13 - 3543 AP
P.O. box 2435 - 3500 GK Utrecht
The Netherlands

T: +31(0)30 244 92 11

F: +31(0)30 244 25 96

E: info@standardfasel.nl

kiwa
gecertificeerd**SCIOS**www.standardfasel.nl